

REHEATER MODEL 260

Main characteristic

Steam injectors of VALFONTA are used to increase the temperature of any liquid.

Steam injection aspires liquid to heat through the holes of the reheater's body where is mixed with the injection steam to get the required increase of temperature.

This procedure causes a constant recirculation inside the tank, which assures a good mixture and the uniformity of the temperature in the tank.

As this device has no mobile parts, noise and vibrations are very low and No maintenance is required.

Body PN16, Maximum pressure 16 bar to 200°C.

Materials

Body: Stainless Steel A351 CF3M

Installation

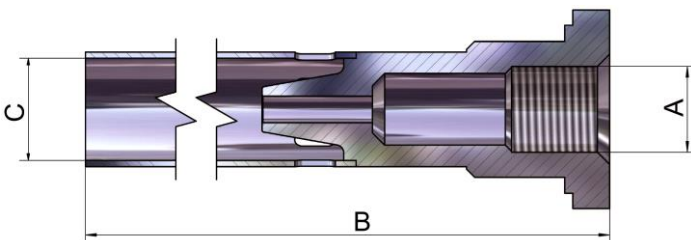
Reheaters are installed horizontally and directly to the pipe. Size nr.1 can be installed in wall tank (using external thread). If it is necessary more capacity, it is possible to install 2 or more injectors in parallel.



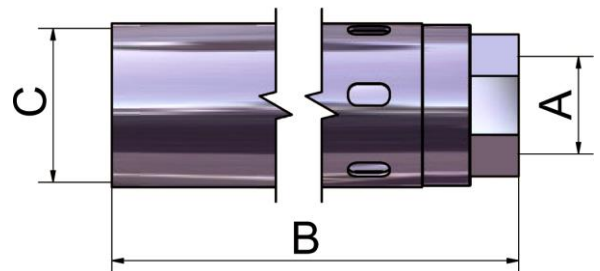
Steam Inlet Pressure (bar)	Reheater Size 260		
	n° 1	n° 2	n° 3
2	45	200	530
3	60	270	710
4	80	340	900
5	100	405	1080
6	115	475	1250
7	135	550	1410
8	150	620	1620
9	170	690	1800
10	185	765	2000
11	200	830	2150
12	225	880	2300
13	240	975	2500
14	255	1025	2700
15	270	1100	2850
16	290	1185	3000
	Flow in Kg/h		

Sizes and Kv

Figure n°	1	2	3	
DN	15	25	40	
Valor Kv	1.5	8.5	13	
Connect. A	R- 1/2"	R- 1"	R- 1 1/2"	
B	202	420	530	mm.
C	25	48	60	mm.



260 N1



260 N2 & N3

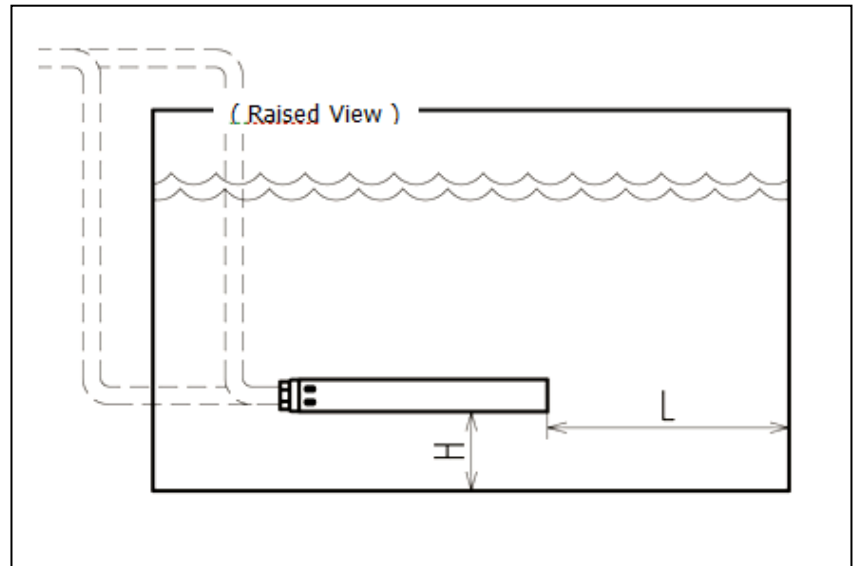


INSTALLATION SCHEME

We recommend installing the injector in a horizontal position, at the bottom of the tank and along the same.

In the discharge area of the injector should not be installed any other element.

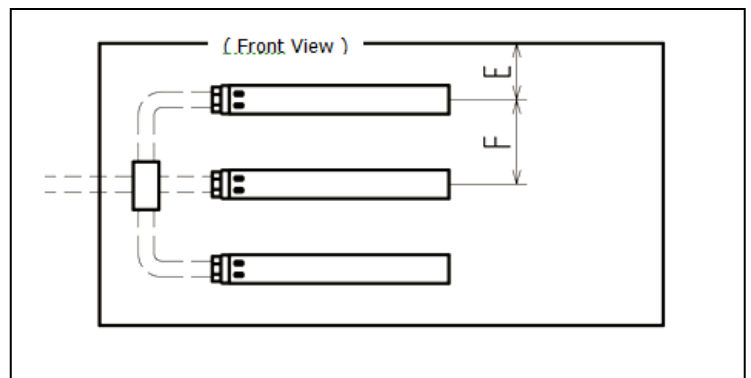
A measure to promote a vibration-free and a silent operation would be that the L size will be as long as possible and keeping clean the suction injector holes, too.



Injector nº	1	2	3
Steam Pressure (bar)	L (mm)	L (mm)	L (mm)
2 - 4	200	250	300
4 - 8	250	450	550
8 - 12	300	650	750
12 - 16	400	1150	1300

Distance H	100	150	200

The injector installation should be always focused along the tank to recirculate and to achieve an effective distribution. If it is necessary the installation of 2 or more injectors, they must be installed focused along the tank, but it is important to know the minimum distance between the wall and the first injector (E = 150) and between injectors (F = 300).



In case of excessive noise, check that suction and discharge holes are not obstructed or the steam pressure is not too high.

Distributor

